

# Media Inserts for VITROCELL® Exposure Modules 6 and 12 Series

Oliver Wisser<sup>1</sup>, Bastian Gutmann<sup>1</sup>, Adam Seymour<sup>2</sup>

<sup>1</sup>VITROCELL Systems GmbH, 79183 Waldkirch, Germany / <sup>2</sup>Covance Laboratories Ltd, Harrogate, UK

## Background

VITROCELL® 6 and 12 modules are equipped with media exchange channels for continuous or intermittent media supply. In applications where this feature is not needed media channels cause increased maintenance efforts for cleaning.

Furthermore, the VITROCELL® 6 module series have a screw plug at the bottom of the media chamber for optional accommodation of the microbalance sensor. This area is difficult to clean unless the screw plug is removed.



Media compartments of VITROCELL® 12 module



Media compartments of VITROCELL® 6 module with screw plug

## Solution

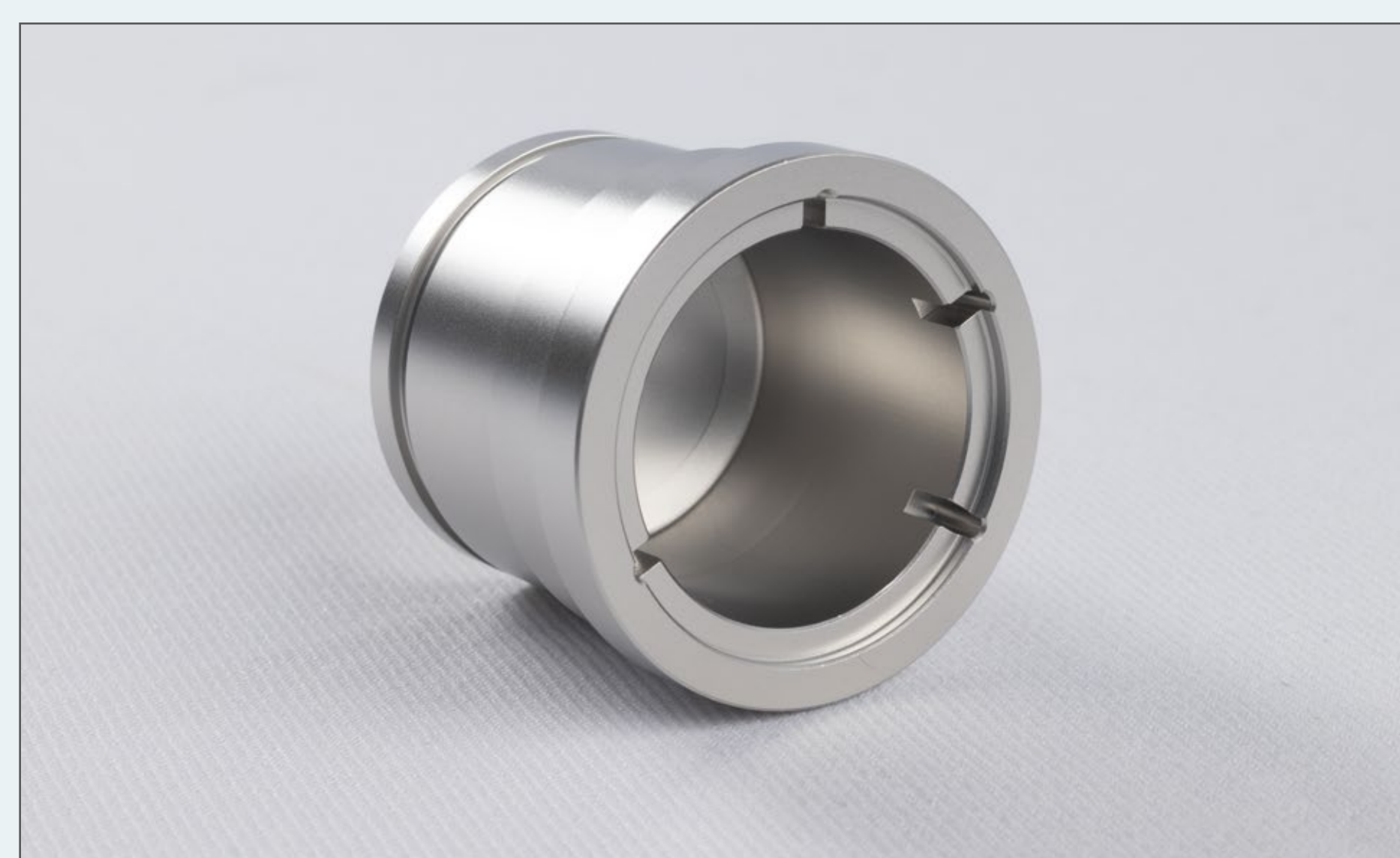
To address this issue raised by key customers, VITROCELL® now offers media inserts as a standard product. They have an integrated support for COSTAR®, ThinCerts®, Falcon® and Millipore cell culture inserts. The media inserts for VITROCELL® 6 modules are easily mounted with the supplied tool, those for VITROCELL® 12 modules can be slid into the media compartment.



Media insert for VITROCELL® 12 series



Module with media insert



Media insert for VITROCELL® 6 series



Module with media insert



Mounting tool

## Conclusion

The new media inserts are easy to mount and offer a practical and economical solution to reduce cleaning efforts of the exposure modules.

The new development reduces the risk of contamination and increases efficiency.