

## Advanced in vitro exposure systems



**VITROCELL® PowderX**

## VITROCELL® PowderX

For cell culture exposure to smallest quantities of dry powders

Touchscreen operation enables a step-by-step user guidance through the entire process



PowderX allows for aerosolisation of small quantities of dry powders and particle deposition on cells cultured on 12- or 24-well sized inserts.

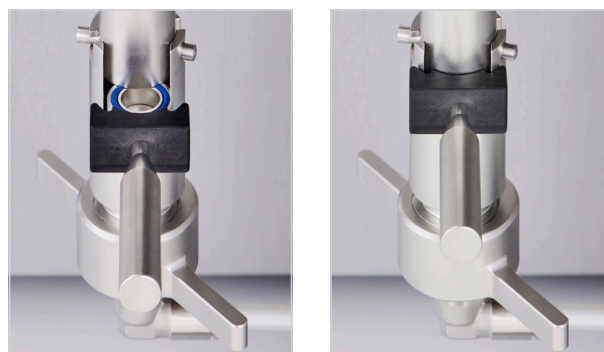
The system features biological barrier integration and continuous sampling from the basolateral compartment.



Base module houses 12- (left) or 24-well sized inserts (right). All commercial brands are supported.

Small powder samples of 5–100 mg are positioned in the quick-lock loading system. Subsequent aerosolisation of the powder takes place under high pressure by a unique jet system. The resulting shear forces facilitate deagglomeration for homogeneous dispersion into the expansion chamber. Final deposition takes place via gravimetric settling.

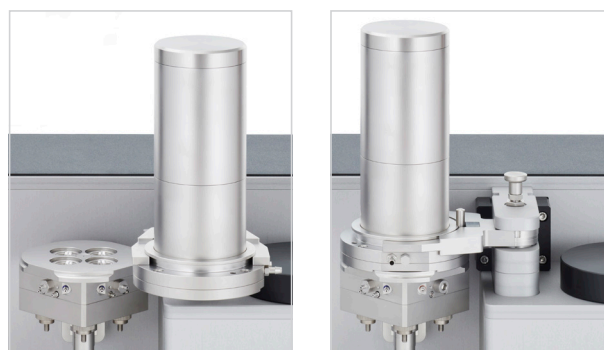
The height of the expansion chamber can be varied in three different steps according to the behaviour and properties of the powder sample. For handling of the inserts the expansion chamber can be separated effort-free from the exposure module.



Quick-lock loading system open (left) and closed (right).

### Working Principle

1. Powder sample is placed in quick-lock loading system.
2. Expansion chamber and base module are tightly sealed by touchscreen operation.
3. Powder sample is aerosolized under high pressure to break up agglomerates for homogeneous dispersion in the expansion chamber.
4. Powder sample settles on cell cultures.



Medium size expansion chamber – standby (left) and sealed (right).



The base module is prepared for continuous or time-based sampling from the media compartment.

### Key Features:

- Easy handling
- Only small quantities of powder needed (5–100 mg)
- No external airflow required
- Exposure time < 30 minutes
- Optional continuous media supply or media sampling
- Optional magnetic stirring for media compartment
- Intuitive user experience with touchscreen operation

## About VITROCELL®

**VITROCELL® exclusively concentrates on the developing, producing, installing, training and servicing of advanced *in vitro* exposure systems.**

The VITROCELL® Systems' team is driven by their vision for new in-vitro standards through state-of-the-art technology, highly qualified workmanship and absolute client dedication. VITROCELL® has successfully collaborated with clients from leading research institutes, contract research organizations, regulatory authorities or industrial laboratories across the world. Working with our team experts, all modules have been tailored to create durable and complete turnkey-systems for ***in vitro*** inhalation toxicology. Gases, environmental atmospheres, nano particles and complex mixtures are analyzed on lung cells at the air/liquid interface using these systems. VITROCELL® technologies are also applicable to solutions for skin research.

Over a decade of devotion to research in this specific field has given our team of design & precision manufacturing specialists the opportunity to mentor highly diversified and complex projects **from conception to completion**. We strive to become a constructive member of each research team, providing support when it is needed, advice when it is required and modules of the highest quality, which are even polished by hand before leaving here to be integrated into your workspace. Every piece of our German engineered equipment is manufactured to the highest of standards – yours.

For more information please scan the QR-Code:



**VITROCELL® Systems GmbH**  
Fabrik Sonntag 3  
79183 Waldkirch  
Germany

Tel. +49 7681 497 79-50  
Fax +49 7681 497 79-79  
Email: [info@vitrocell.com](mailto:info@vitrocell.com)  
[www.vitrocell.com](http://www.vitrocell.com)



## Advanced in vitro exposure systems



Product News  
**2022**  
Edition May 2022