

# Advanced in vitro exposure systems

VITROCELL® EPITHELIX Nanopress



# VITROCELL® EPITHELIX Nanopress

## An efficient tool for the powder dosing of 3-D cell cultures

The VITROCELL® EPITHELIX Nanopress enables particle and powder dosage in a precise and reproducible manner, thus making it an optimal tool for exposure to 3-D cell cultures.

The process was developed by EPITHELIX.

First, the test substance is mixed with Dextran powder. The mixing ratio can be varied according to the required dose/response relationship. Using the nanopress, tablets are produced so that they can be placed directly on the cell cultures. After incubation of approximately 15 min. the Dextran tablet dissolves and the cells are directly exposed to the test substance.



### Features

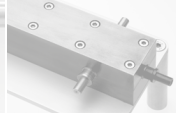
- Exposure to a defined and small dose possible
- Easy to use
- Perfect screening tool



Exposure Systems



Dose Supply



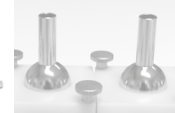
Dilution



Racks & Carts



Dose Monitoring



Skin Exposure



Auxiliary Equipment



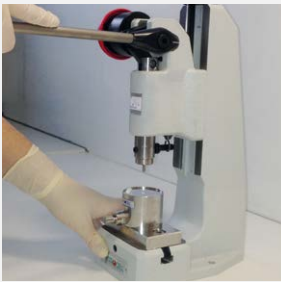
1 | Add Dextran powder to the press



2 | Fill the reservoir



3 | Remove surplus powder from the press surface with a cell scraper



4 | Push the lever



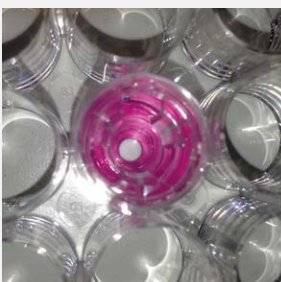
5 | Push the button to expel the tablet



6 | Remove the tablet



7 | Place the tablet on the apical surface



8 | Incubate for approx. 15 minutes



9 | The Dextran tablet is entirely dissolved

## About VITROCELL®

**VITROCELL® exclusively concentrates on the developing, producing, installing, training and servicing of advanced *in vitro* exposure systems.**

The VITROCELL® Systems' team is driven by their vision for new in-vitro standards through state-of-the-art technology, highly qualified workmanship and absolute client dedication. VITROCELL® has successfully collaborated with clients from leading research institutes, contract research organizations, regulatory authorities or industrial laboratories across the world. Working with our team experts, all modules have been tailored to create durable and complete turnkey-systems for *in vitro* inhalation toxicology. Gases, environmental atmospheres, nano particles and complex mixtures are analyzed on lung cells at the air/liquid interface using these systems. VITROCELL® technologies are also applicable to solutions for skin research.

Over a decade of devotion to research in this specific field has given our team of design & precision manufacturing specialists the opportunity to mentor highly diversified and complex projects **from conception to completion**. We strive to become a constructive member of each research team, providing support when it is needed, advice when it is required and modules of the highest quality, which are even polished by hand before leaving here to be integrated into your workspace. Every piece of our German engineered equipment is manufactured to the highest of standards – yours.

VITROCELL® Systems GmbH  
Fabrik Sonntag 3  
79183 Waldkirch  
Germany

Tel. +49 7681 497 79-50  
Fax +49 7681 497 79-79  
Email: [info@vitrocell.com](mailto:info@vitrocell.com)  
[www.vitrocell.com](http://www.vitrocell.com)

