

Advanced in vitro exposure systems

VITROCELL® CO Monitor



VITROCELL® CO Monitor

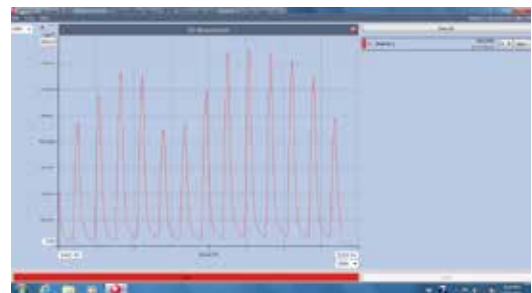
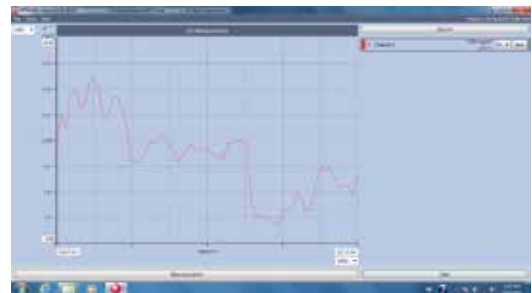
High-end solution for gas monitoring

CO measurement is an efficient way to monitor the gas phase in cigarette smoke and other aerosols. VITROCELL® offers a high-end solution for precise measurement of the CO concentration within different ranges and channels. Each unit is delivered turnkey, with inline reading and recording using the VITROCELL® Monitor software.



Features

- Sampling system with integrated gas pump
- Minimum sampling gas flow 0.3 l/min.
- NDIR Gas Analyzer SIEMENS ULTRAMAT 6
- Example for range configuration:
 - Range 1: 0...5,000 ppm
 - Range 2: 0...10,000 ppm
 - Range 3: 0...15,000 ppm
 - Range 4: 0...20,000 ppm
- Automatic and manual range switching
- Interface RS 485 / RS 232
- Bus cable and connector for Profibus
- VITROCELL® Monitor software incl. Laptop
- Dimensions Analyser Rack
ca. 746 mm (H) x 600 mm (W) x 673 mm (D),
ready mounted
- FAT included



About VITROCELL®

VITROCELL® exclusively concentrates on the developing, producing, installing, training and servicing of advanced *in vitro* exposure systems.

The VITROCELL® Systems' team is driven by their vision for new in-vitro standards through state-of-the-art technology, highly qualified workmanship and absolute client dedication. VITROCELL® has successfully collaborated with clients from leading research institutes, contract research organizations, regulatory authorities or industrial laboratories across the world. Working with our team experts, all modules have been tailored to create durable and complete turnkey-systems for *in vitro* inhalation toxicology. Gases, environmental atmospheres, nano particles and complex mixtures are analyzed on lung cells at the air/liquid interface using these systems. VITROCELL® technologies are also applicable to solutions for skin research.

Over a decade of devotion to research in this specific field has given our team of design & precision manufacturing specialists the opportunity to mentor highly diversified and complex projects **from conception to completion**. We strive to become a constructive member of each research team, providing support when it is needed, advice when it is required and modules of the highest quality, which are even polished by hand before leaving here to be integrated into your workspace. Every piece of our German engineered equipment is manufactured to the highest of standards – yours.

VITROCELL® Systems GmbH
Fabrik Sonntag 3
79183 Waldkirch
Germany

Tel. +49 7681 497 79-50
Fax +49 7681 497 79-79
Email: info@vitrocell.com
www.vitrocell.com

